

the Horizon

2,190
Square Ft.

2,190
Finished

4
Beds

3
Baths

1
Half Baths

2
Garage



THE VIEWS

TOWNHOME COMMUNITY

End-Unit Townhome • Fully Finished Basement • Gourmet Kitchen
Upper-Level Primary Suite with Private Bath & Walk-In Closet
2-Car Garage • Designer Finishes & Upgrades Throughout



the Horizon

2,190
Square Ft.

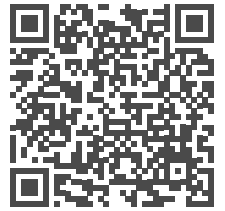
2,190
Finished

4
Beds

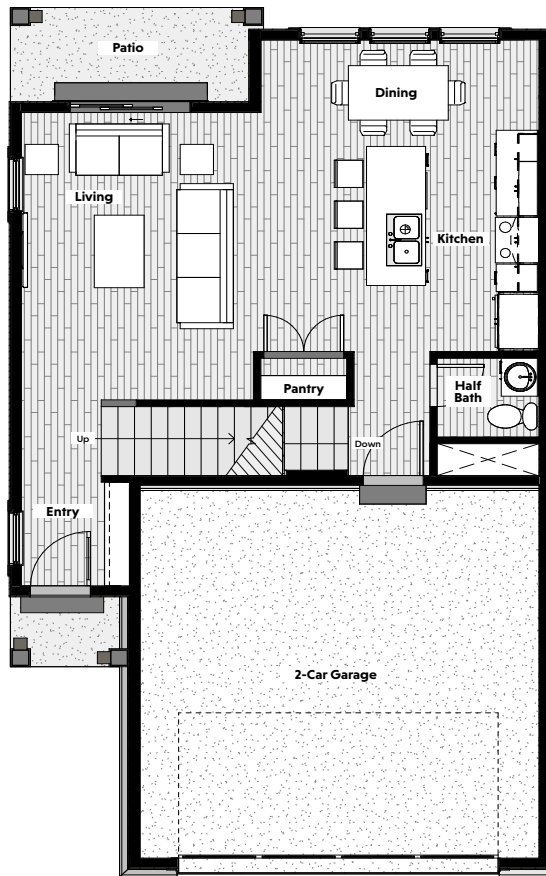
3
Baths

1
Half Baths

2
Garage



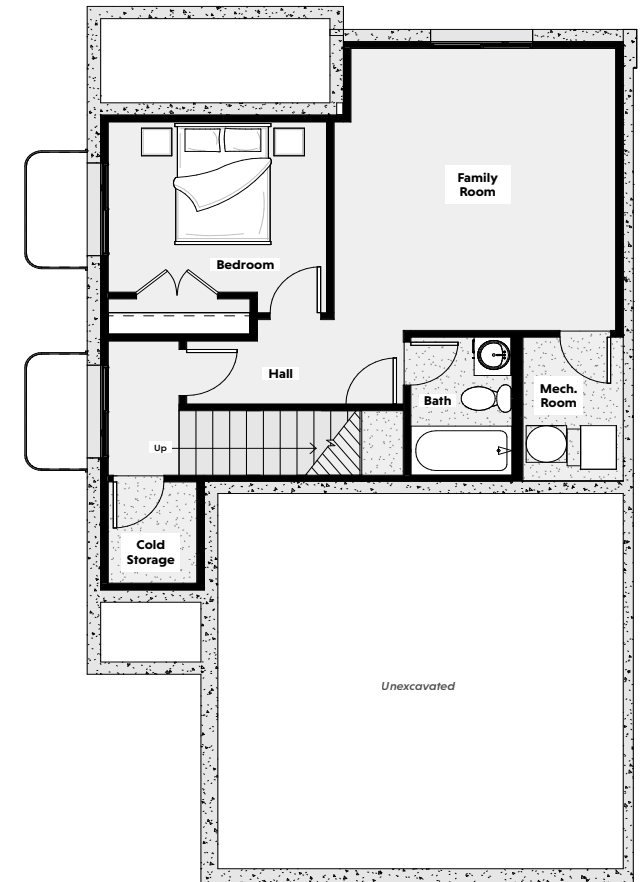
Main Floor



Upper Floor



Basement



Explore additional details by scanning the QR code above or visiting homecenterconstruction.com



Images, renderings, and floor plans shown are conceptual in nature and intended for general reference only. Features, layouts, square footage, and design elements may be updated or revised at the discretion of Home Center Construction without prior notice. Final home details may differ from what is depicted.