

# the Iris

**4,634**  
Square Ft.

**3,148**  
Finished

**5**  
Beds

**2**  
Baths

**1**  
Half Baths

**2**  
Garage



XL Upper-Level Primary Suite with Private Bath and Walk-In Closet

- 5 Total Upstairs Bedrooms • Gourmet Kitchen with Large Kitchen Island • Flex Room/Living Off of Entry
- 2-Car Garage • Full Unfinished Basement • Designer Finishes Throughout



# the Iris

4,634  
Square Ft.

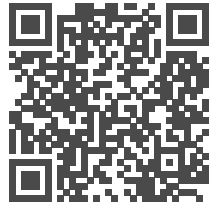
3,148  
Finished

5  
Beds

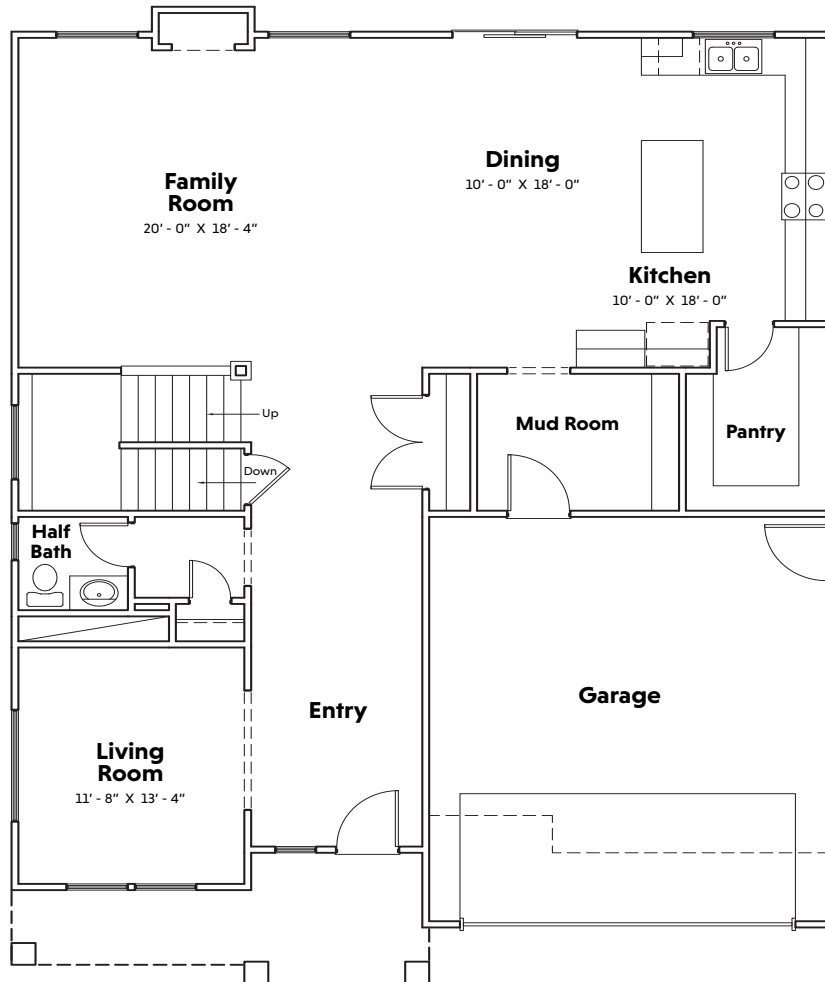
2  
Baths

1  
Half Baths

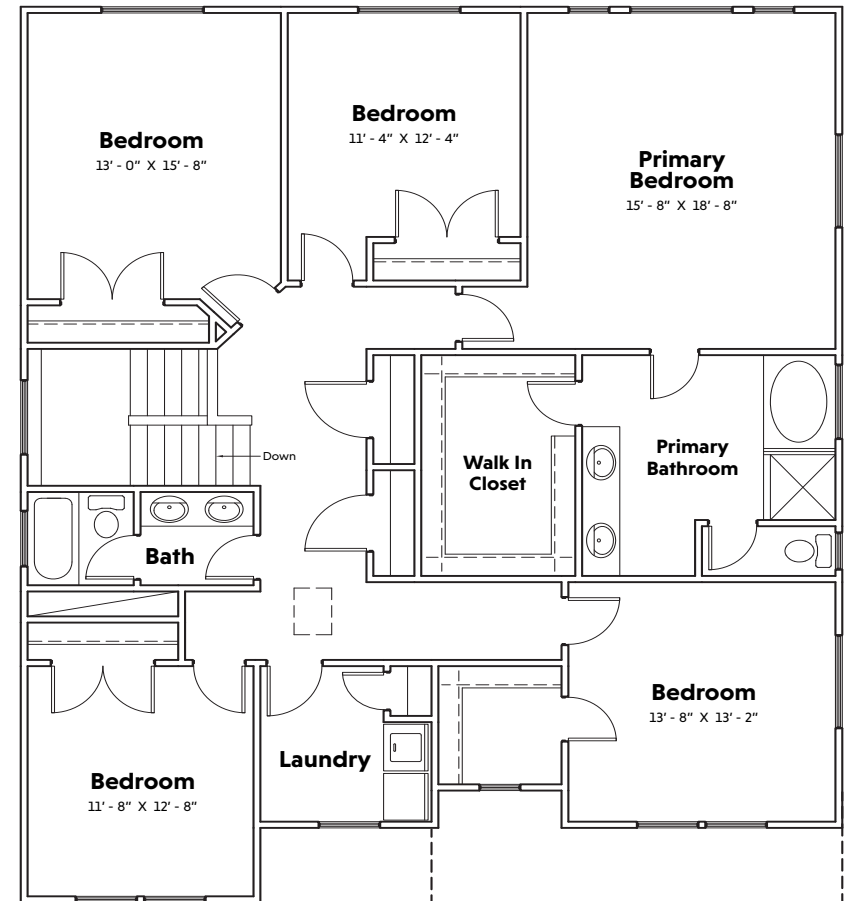
2  
Garage



## Main Floor



## Upper Floor



Explore the basement layout and additional details by scanning the QR code or visiting [homecenterconstruction.com](https://homecenterconstruction.com)



Images, renderings, and floor plans shown are conceptual in nature and intended for general reference only. Features, layouts, square footage, and design elements may be updated or revised at the discretion of Home Center Construction without prior notice. Final home details may differ from what is depicted.