

# the Beatrix

5,540  
Square Ft.

3,234  
Finished

5  
Beds

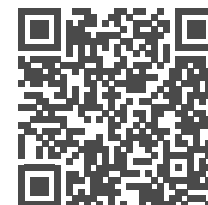
3  
Baths

1  
Half Baths

3-4  
Garage



- Main-Level Primary Suite with XL Walk-In Closet • 4 Upstairs Bedrooms & 2 Full Baths
- Flex Room/Living Off of Entry • Gourmet Kitchen with XL Kitchen Island • Full Unfinished Basement
  - Designer Touches Throughout • 3 or 4-Car Garage Configuration (Extra-Deep Bay)



# the Beatrix

5,540  
Square Ft.

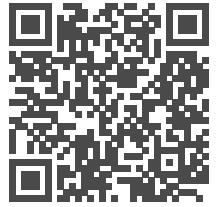
3,234  
Finished

5  
Beds

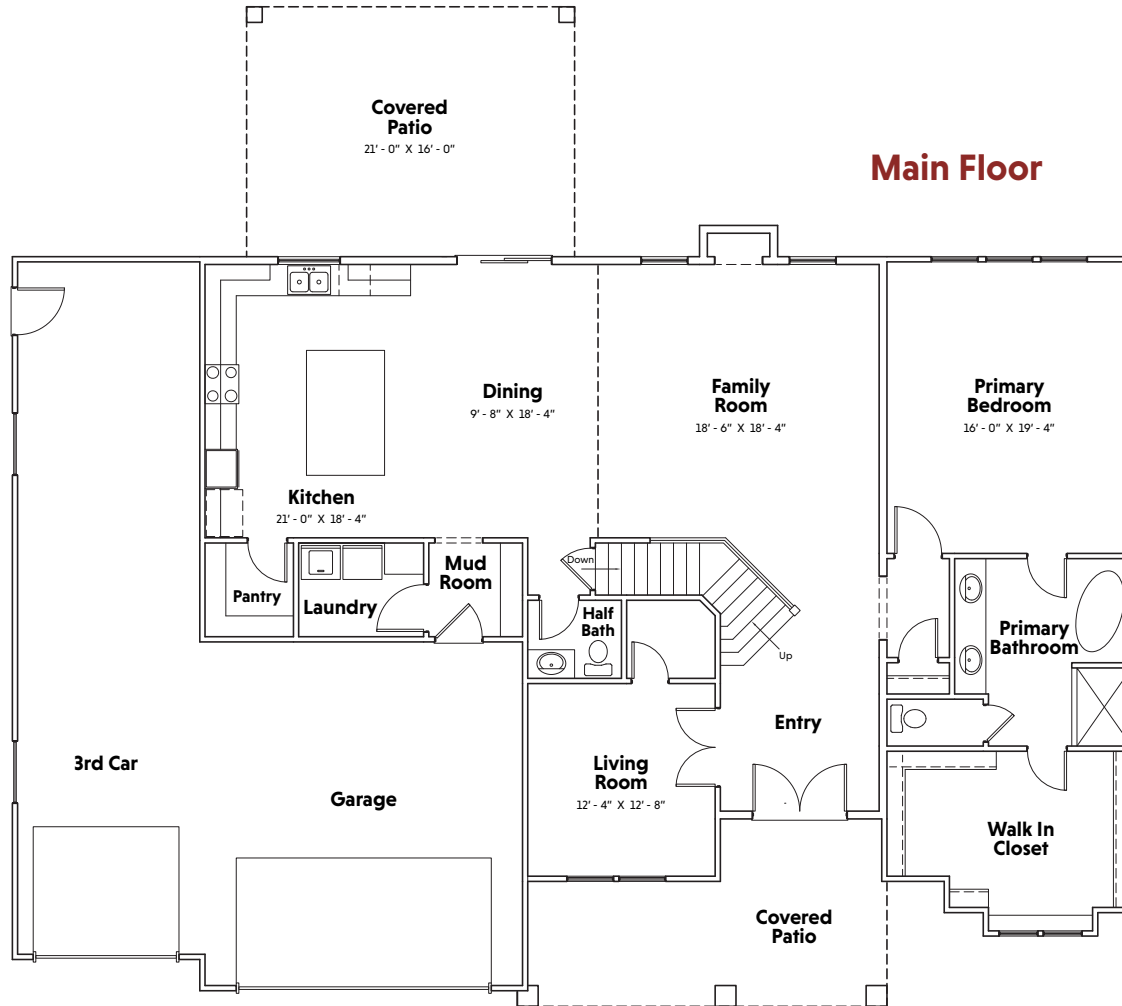
3  
Baths

1  
Half Baths

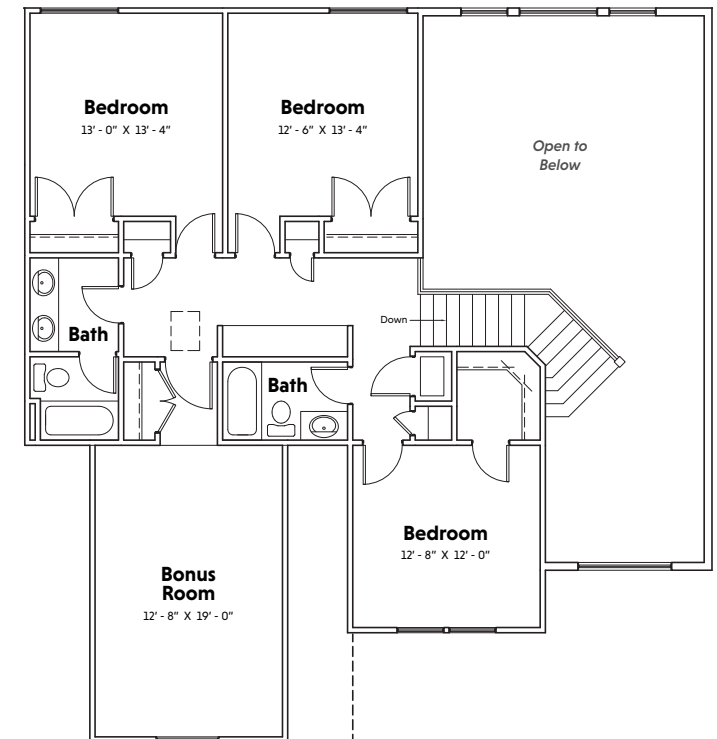
3-4  
Garage



## Main Floor



## Upper Floor



Explore the basement layout and additional details by scanning the QR code or visiting [homecenterconstruction.com](https://homecenterconstruction.com)



Images, renderings, and floor plans shown are conceptual in nature and intended for general reference only. Features, layouts, square footage, and design elements may be updated or revised at the discretion of Home Center Construction without prior notice. Final home details may differ from what is depicted.